



Reid & Taylor

BOND WITH THE BEST





FOR OVER ONE HUNDRED AND SEVENTY YEARS (SINCE 1830) THE SMALL INDUSTRIAL TOWN OF LANGHOLM IN SCOTLAND HAS PRODUCED THE FINEST BLENDS OF FABRIC IN THE WORLD. AND OVER THE YEARS THE REID & TAYLOR LABEL HAS BECOME THE DRESS CODE FOR A LOYAL FAN FOLLOWING OF THE DISCERNING AND DISTINGUISHED ACROSS THE GLOBE.

IT IS THE ONE SUITING THAT HAS WITHSTOOD TWO WORLD WARS, THE COLD WAR, BEATLEMANIA, MARGARET THATCHER, JAMES BOND, THE TRENCHES OF 80S BOARDROOM WARFARE AND EVERY IMAGINABLE WHIM, FANCY OR FAD IN FASHION.

ADHERING AT ALL TIMES TO AN UNMISTAKABLE RULE:  
THE APPROPRIATE ATTIRE FOR THE APPROPRIATE OCCASION.  
THE DRESS CODE FOR GENTLEMEN.





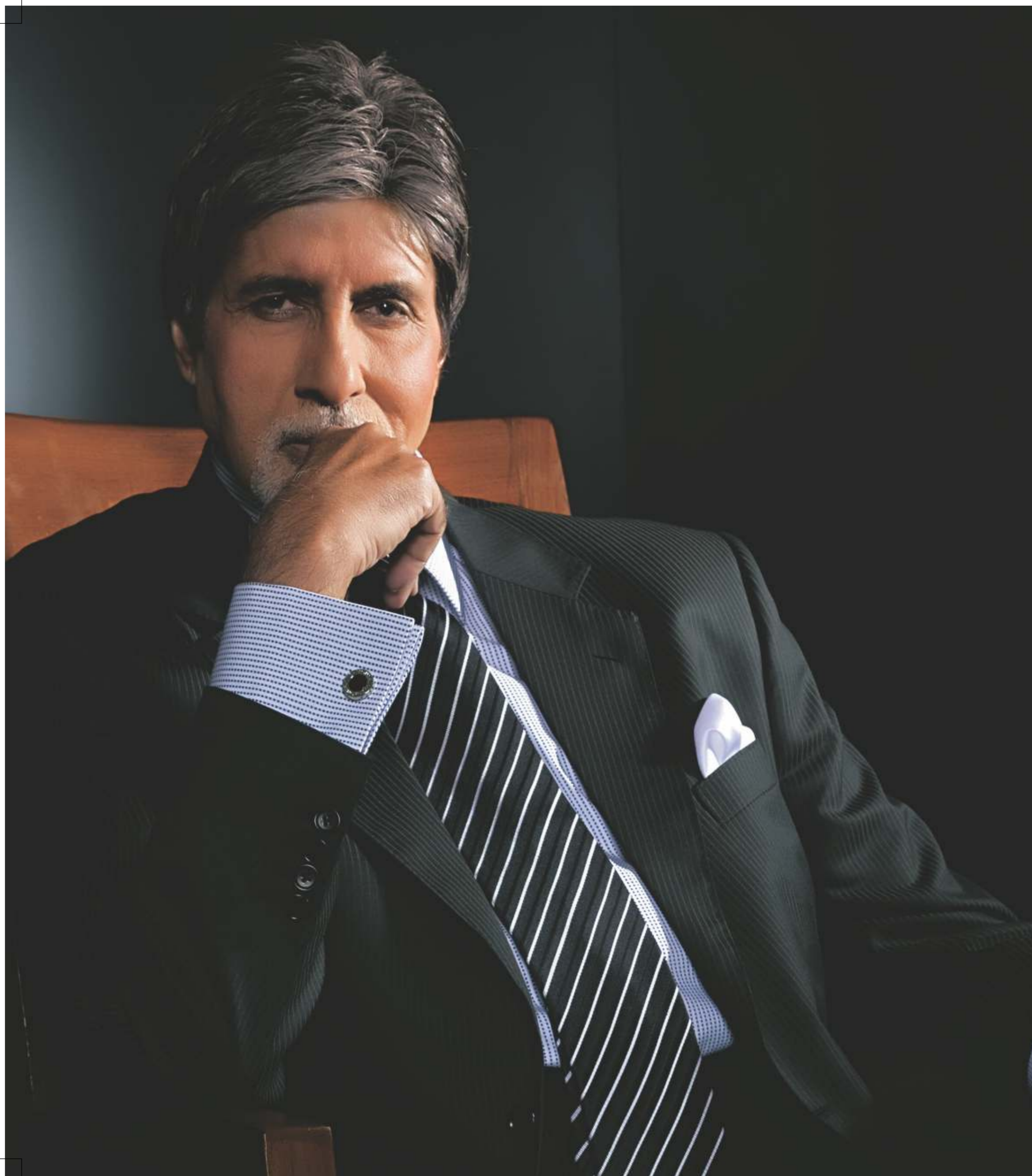
THE ARISTOCRATIC RAM. THIS RAMSHEAD DEVICE WITH TOP-HAT AND MONOCLE IS THE WORLDWIDE SYMBOL OF REID & TAYLOR. AFFECTIONATELY KNOWN AS 'RUPERT', THE RAMSHEAD APPEARS AT THE END OF EVERY PIECE OF CLOTH WOVEN BY REID & TAYLOR AND ALL PROMOTIONAL MATERIAL, AS THE CORPORATE HALLMARK OF QUALITY AND INTEGRITY.



STATEMENTS OF STYLE  
OVER THE YEARS  
REID & TAYLOR AND AMITABH  
BACHCHAN HAVE BEEN  
CREATING SOME OF THE MOST  
DISTINCTIVE STATEMENTS OF  
PERSONAL STYLE.  
THE FOLLOWING PAGES  
RECAPTURE THE LOOKS THAT  
DEFINE THIS REMARKABLE  
COLLABORATION.







SINGLE BREASTED,  
TWO BUTTON  
PIN STRIPE SUIT WITH  
NOTCH LAPELS.  
AB SIGNATURE.

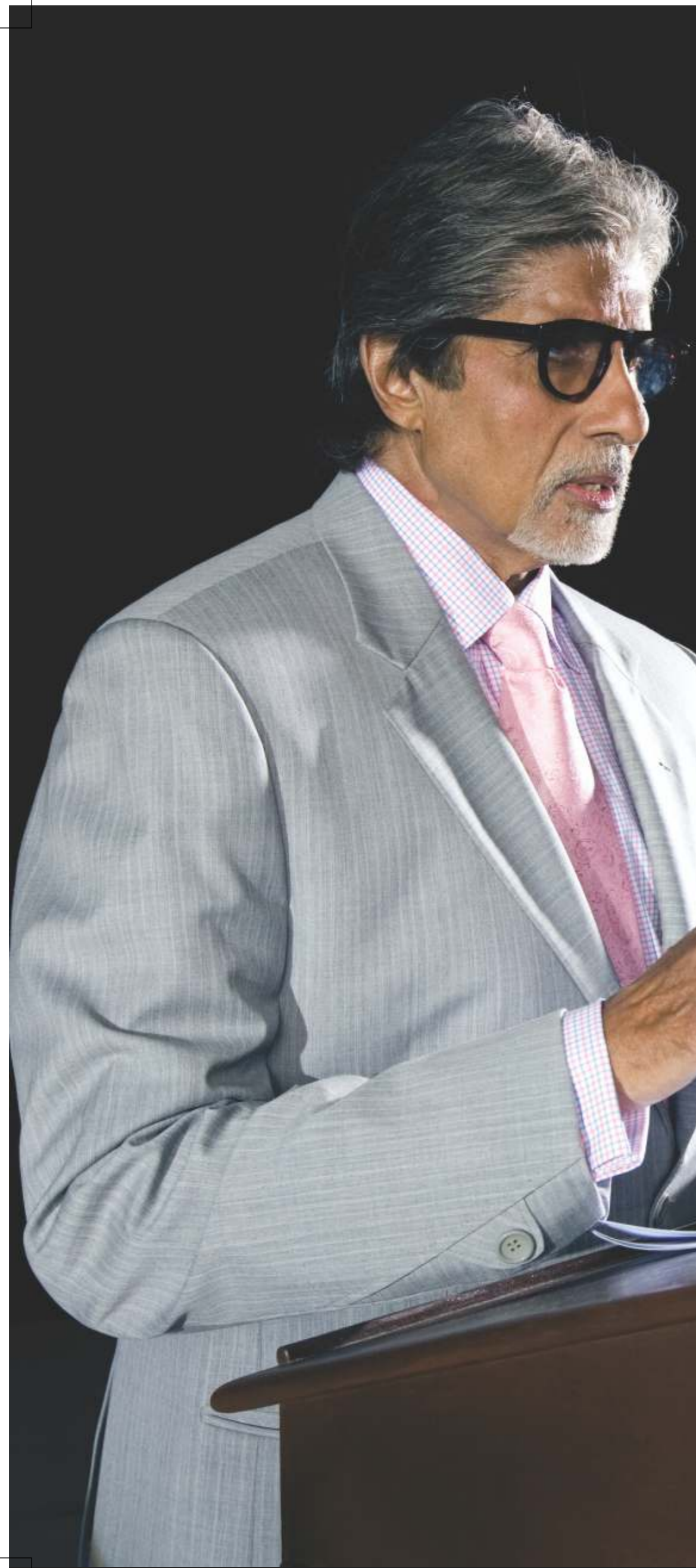




NAVY BLUE PIN STRIPE,  
DOUBLE BREASTED JACKET  
TEAMED WITH WHITE SHIRT,  
WHITE LINEN TROUSERS  
AND A LIGHT BLUE SCARF.  
MAGNIFICENCE







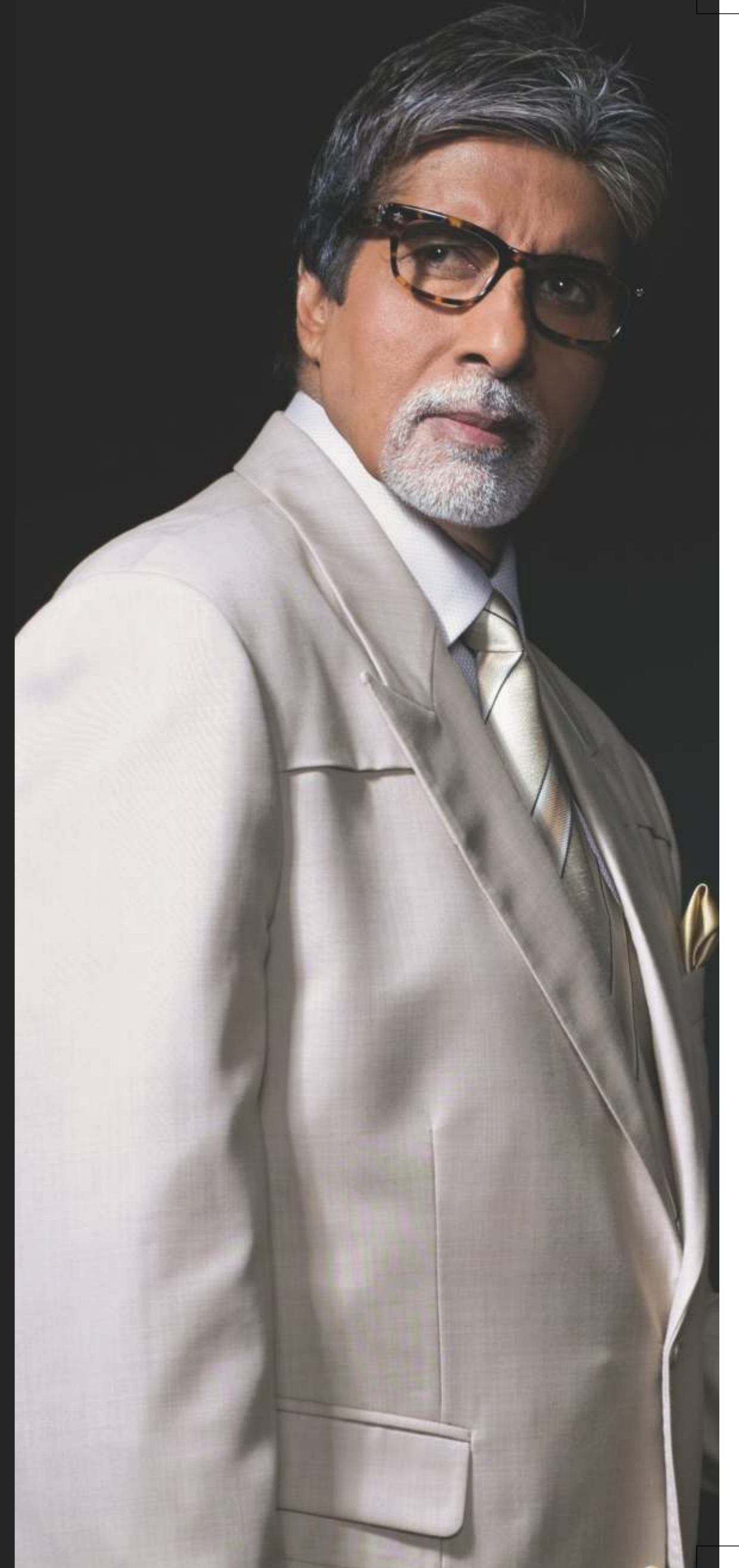
SINGLE BREASTED CLASSIC  
PINSTRIPE GREY SUIT WITH  
NOTCH LAPELS. CHECKERED  
SHIRT & PINK TIE.  
AB COLLECTION



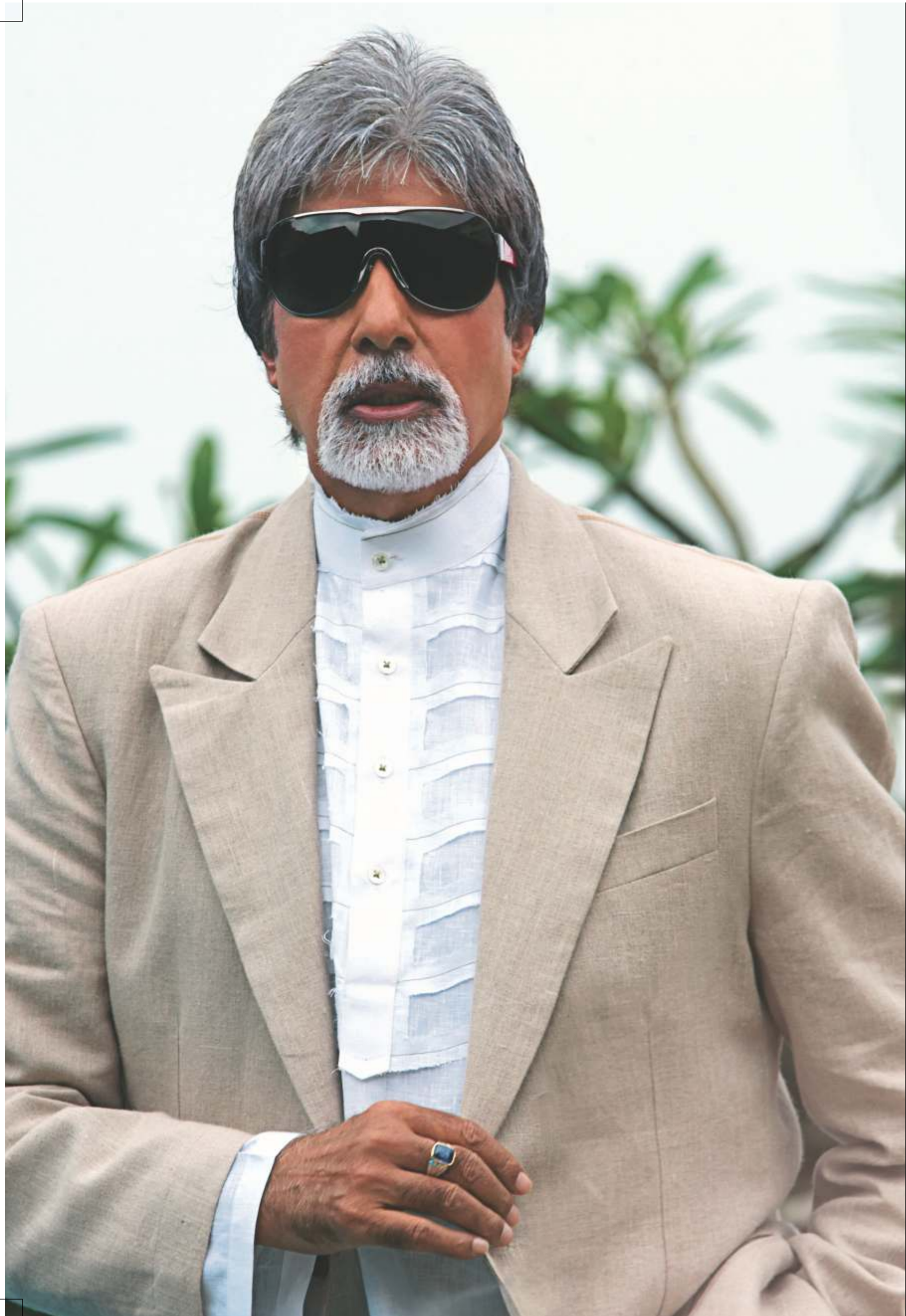




HUNTING JACKET  
INSPIRED DETAIL IN THIS  
TWO BUTTON JACKET  
FOR THIS LIGHTWEIGHT DAY  
SUIT WITH TICKET POCKETS  
AND PEAK LAPELS.  
BOND STREET







CASUAL JACKET WITH  
PEAKED LAPELS AND  
SIDE VENTS TEAMED WITH  
WHITE RUFFLED,  
CHINESE COLLAR, LINEN SHIRT.  
LINENCRAFT



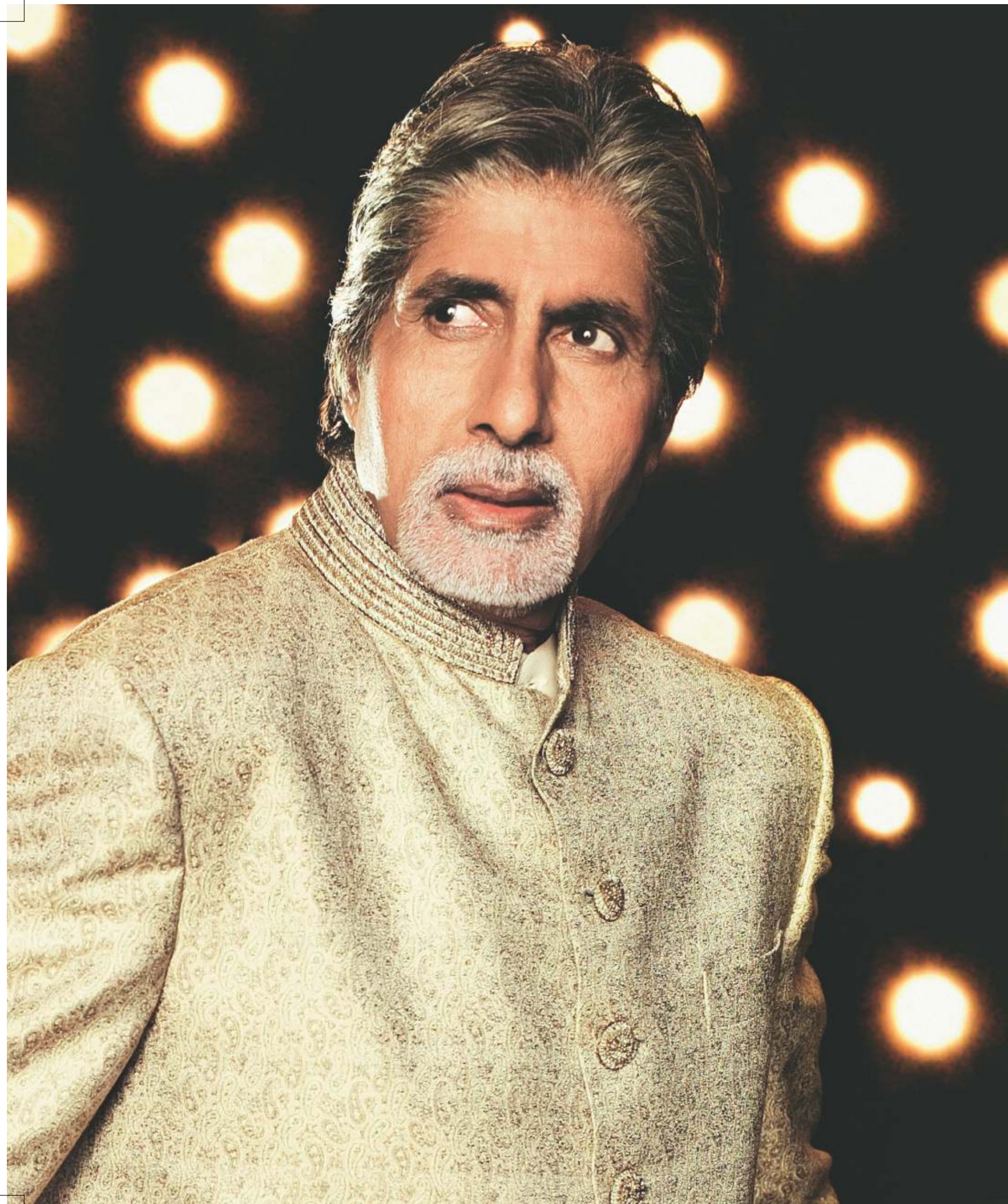




DOUBLE BREASTED  
FOUR BUTTON CHECK  
SUIT WITH PEAKED LAPELS.  
STYLECHECKS







OPEN COLLAR SHERWANI,  
LIGHTWEIGHT  
SILK WOOL BLEND.  
ROYAL SHERWANI.



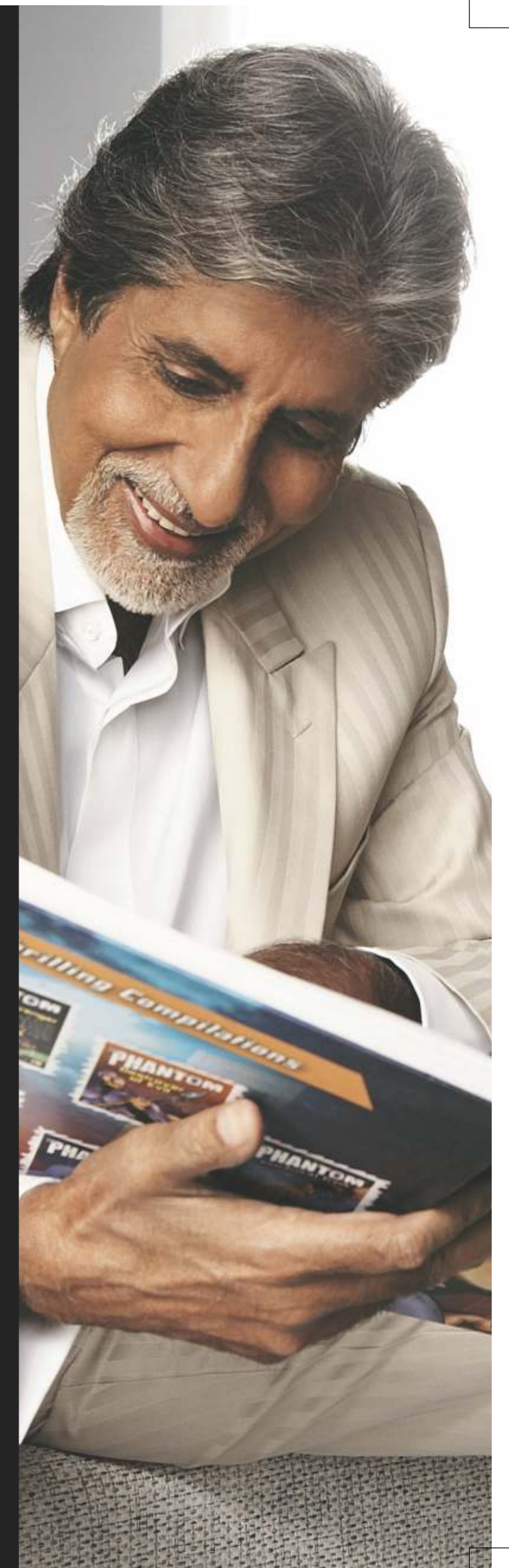


THREE PIECE  
PINSTRIPE SUIT WITH  
PEAKED LAPELS.  
PINK TIE,  
SHIRT & POCKET SQUARE.  
INSPIRATION





SINGLE BREASTED  
SELF-STRIPE DAY  
SUIT WITH WIDE  
NOTCH LAPELS.  
SOLO FASHION





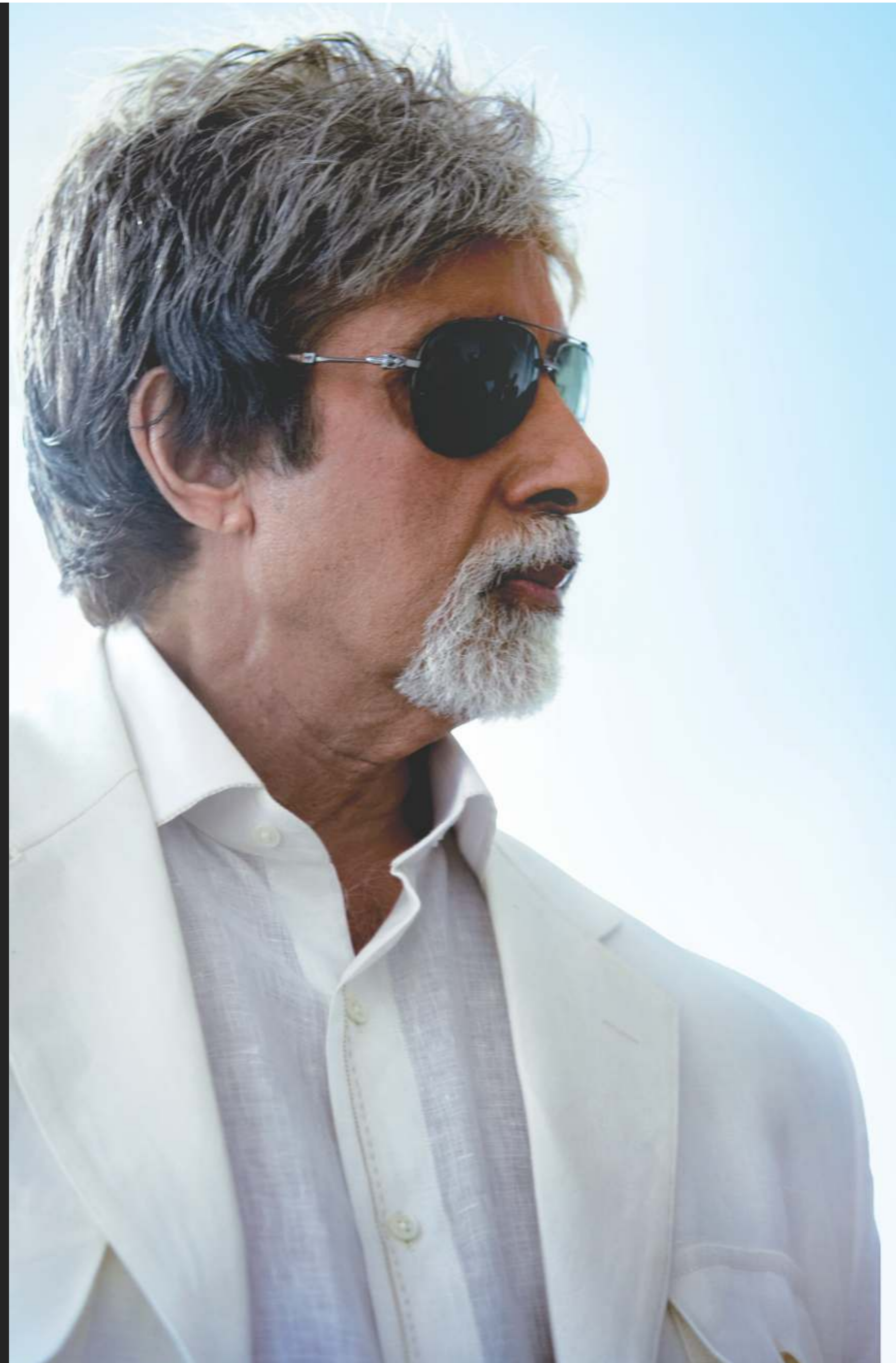


SLIM FIT SINGLE BREASTED  
THREE BUTTON BUSINESS  
SUIT WITH NOTCH LAPELS.  
AB LINE





WHITE LINEN JACKET  
WITH BUTTON DOWN  
FLAP POCKETS AND  
DARK BUTTONS.  
CLASSIC FLAT FRONT  
TROUSERS WITH SIDE  
SLANT POCKETS.  
INSPIRATIONS

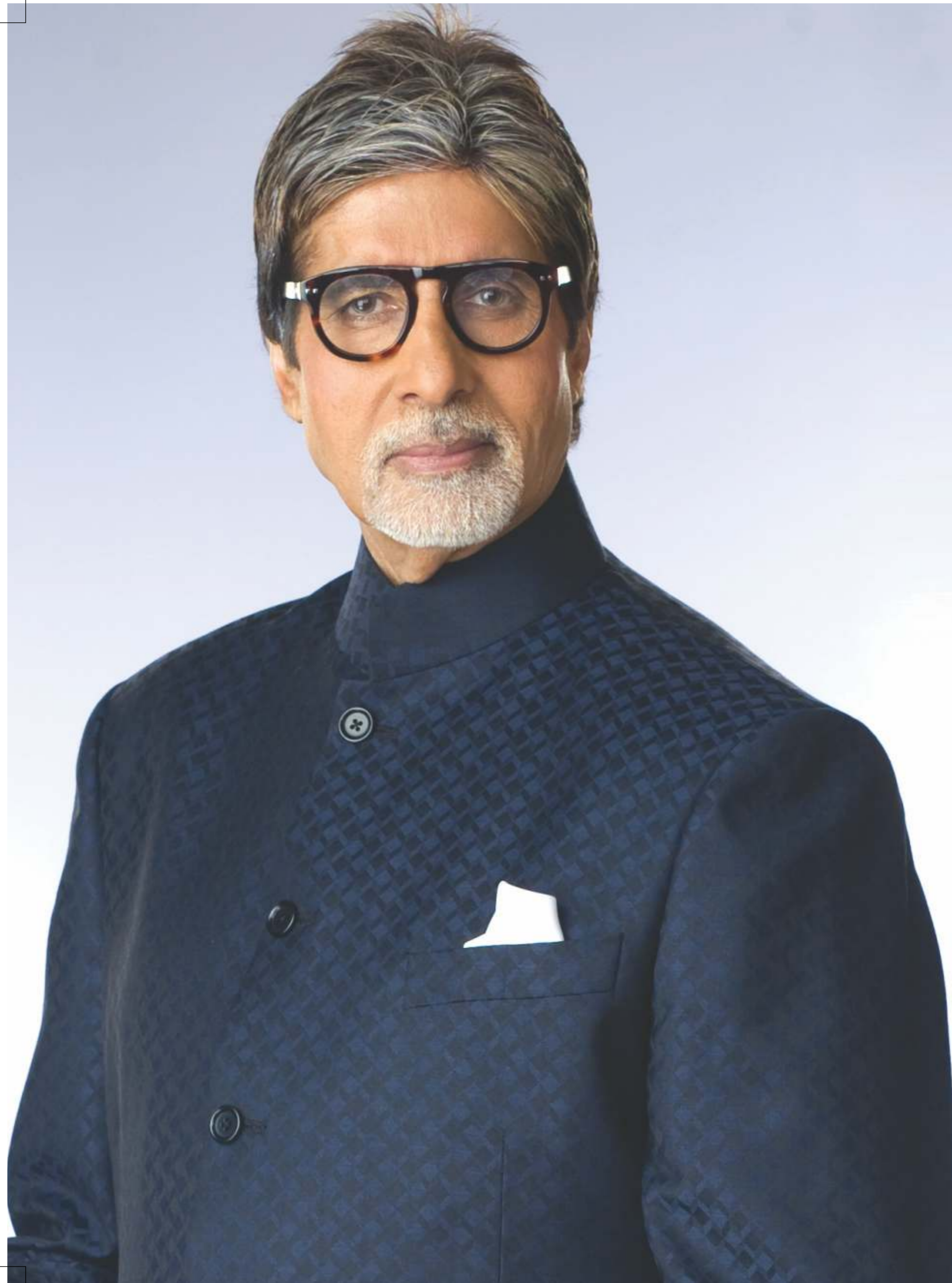






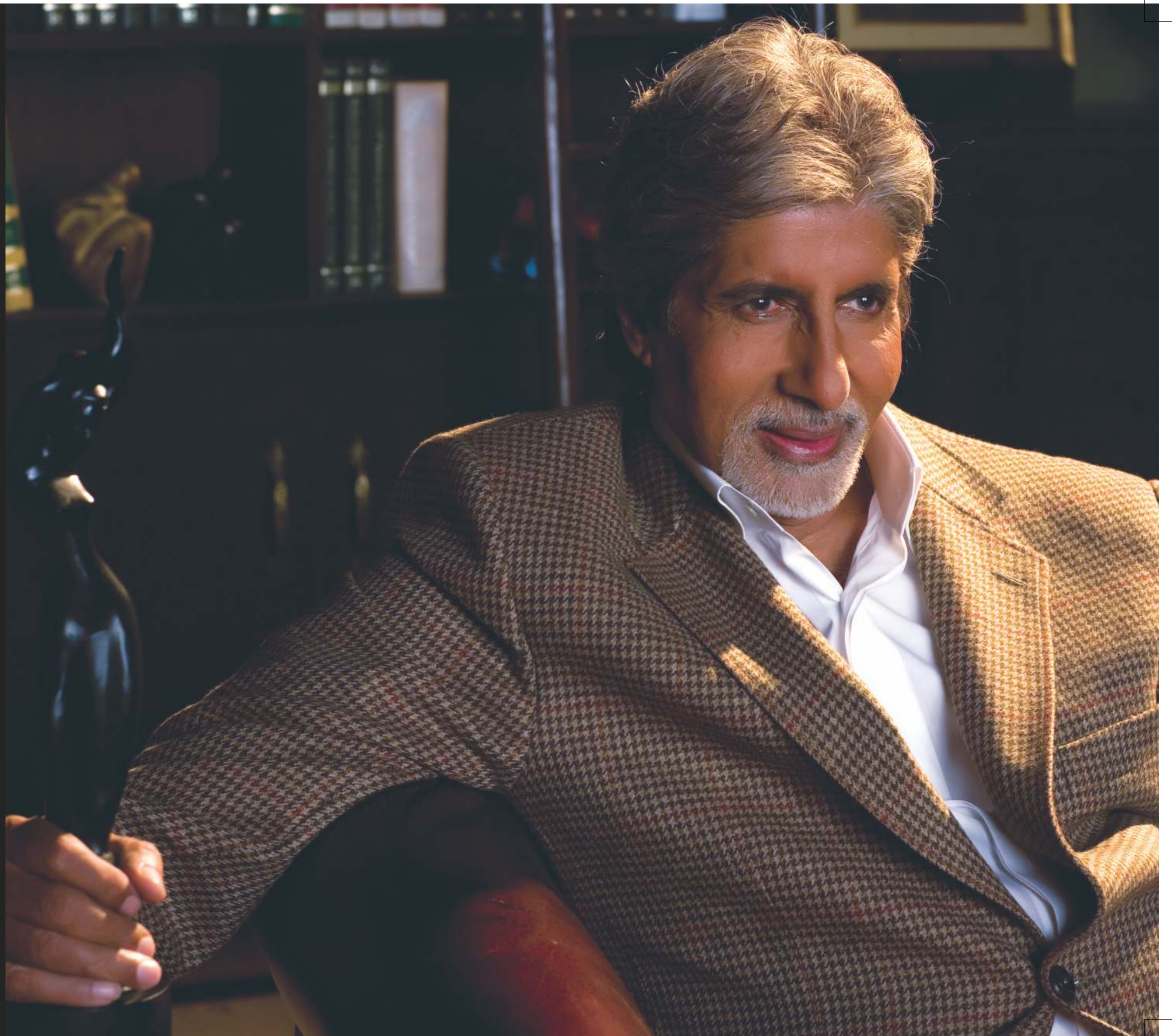
TWO BUTTON SINGLE  
BREASTED NAVY JACKET  
WITH PATCH POCKETS.  
POWDER BLUE SHIRT AND  
FLAT FRONT TROUSER.  
STAR





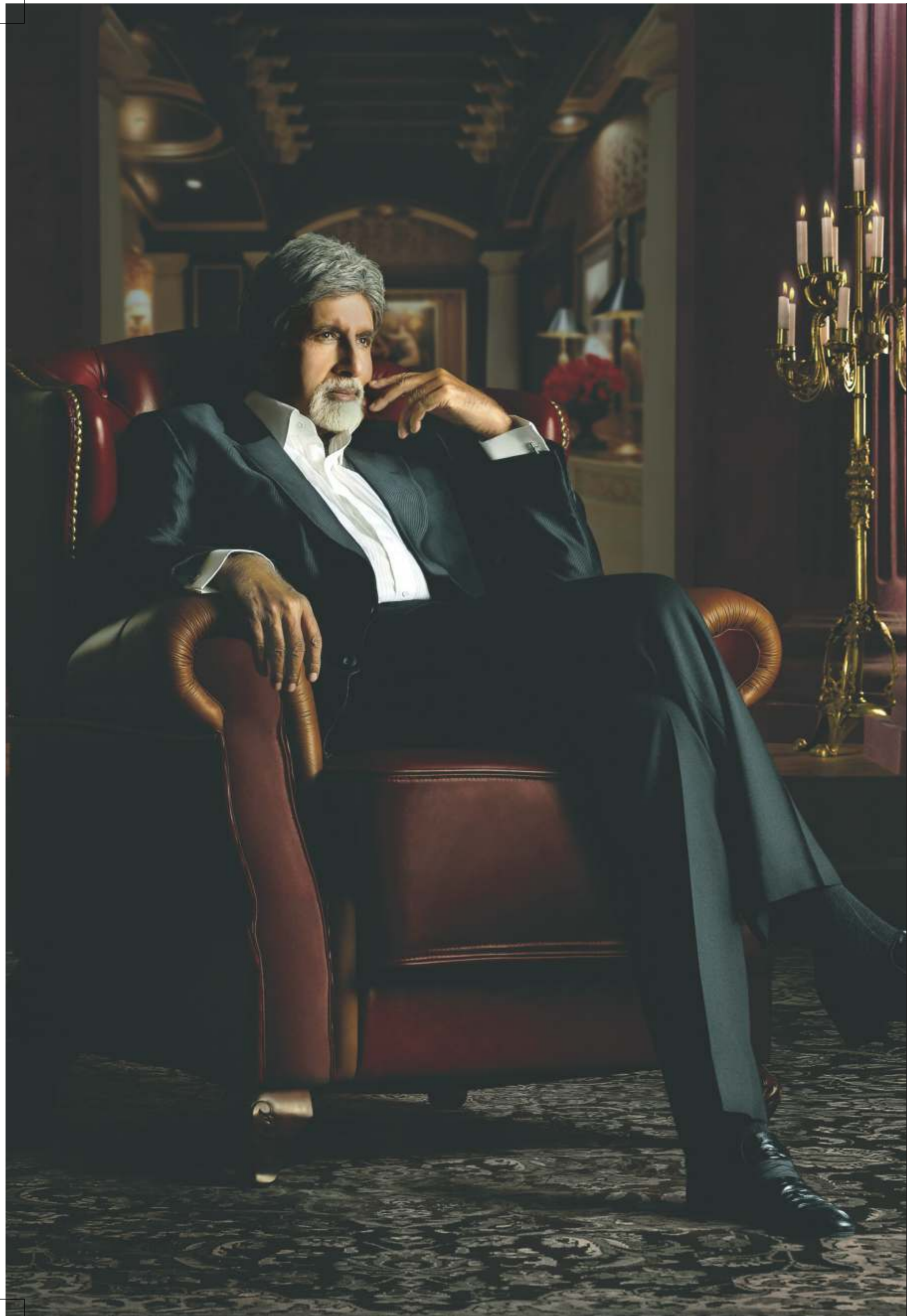
GIVE YOURSELF  
THAT PERFECT PRINCELY  
LOOK AND GET  
THE ATTENTION  
YOU DESERVE WITH  
THIS ROYAL BLUE  
BANDGALA  
WITH PATCH POCKETS  
FOR THAT  
CLASSIC PERFECTION.  
AMITABH LINE





HOUNDSTOOTH  
TWEED JACKET WITH  
PEAKED LAPELS.  
SCOTLAND TWEED






CLASSIC BLACK  
SINGLE BREASTED SUIT  
WITH NOTCHED LAPELS.  
INSPIRATIONS

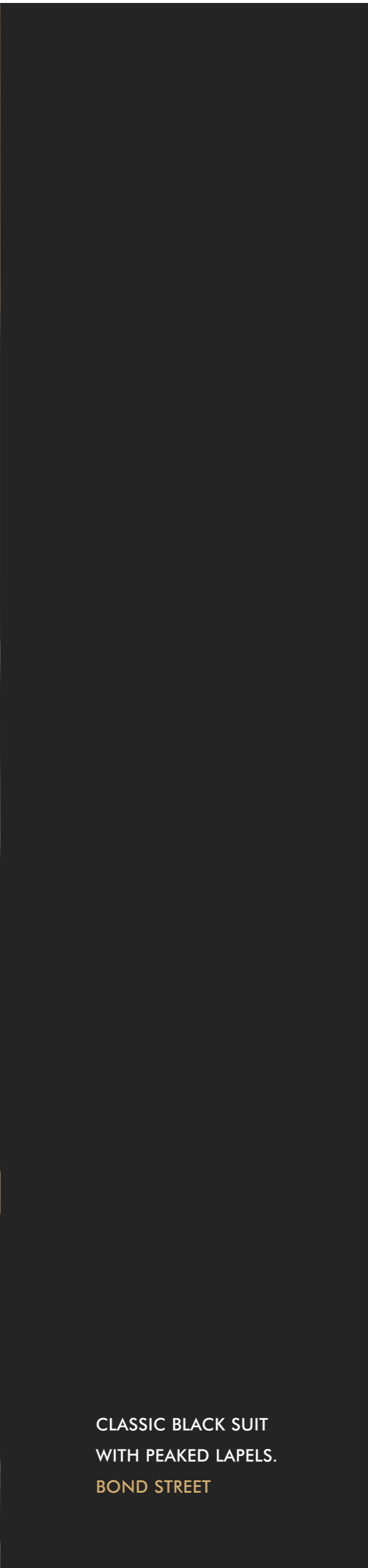




A man with grey hair and a beard, wearing a dark blue pinstriped suit, is seated on a light-colored armchair. He is looking towards a woman on the left who is holding a microphone towards him. The woman is wearing glasses and a dark top. The background is a white wall with a grid pattern. The lighting is soft and professional.

SINGLE BREASTED TWO  
BUTTON SUIT IN DARK BLUE  
FABRIC WITH PURPLE STRIPES.  
AB LINE



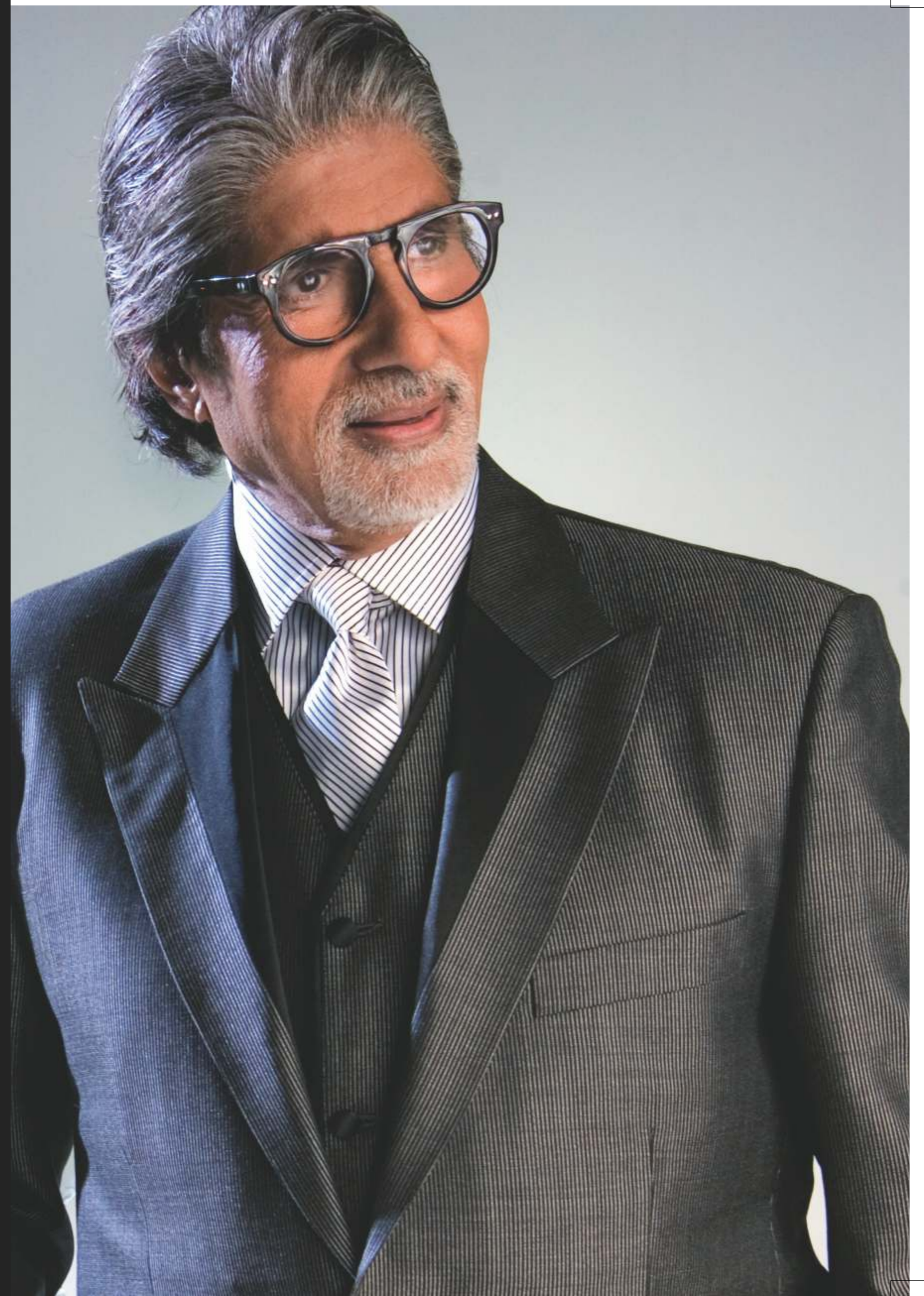


CLASSIC BLACK SUIT  
WITH PEAKED LAPELS.  
BOND STREET





SINGLE BREASTED  
THREE PIECE SUIT WITH  
CONTRASTED LAPELS  
AND JACKET DETAILING  
ON THE LAPELS.  
NATURAL CLASSICS







SINGLE BREASTED TWIN  
LAPEL STRIPE DAY SUIT.  
SOLO FASHION











Reid & Taylor (India) Ltd.,  
Thandya Industrial Area,  
Thandavapura - 571301,  
Nanjangud Taluk, Mysore,  
Dist. Karnataka. India.  
Tel.: +91 8221 228713 - 20.  
Fax: +91 8221 228710.  
Visit us at [www.bondwiththebest.com](http://www.bondwiththebest.com)

For Trade Enquiries,  
Contact: [Intl.business@reidntaylor.co.in](mailto:Intl.business@reidntaylor.co.in)